

Welcome home ...

How to Apply

Talk to your Parole Officer about your interest in McMillan House. It takes time for your application to be approved so start the conversation now. We accept women from anywhere in the country.

We also accept women referred from other agencies, like Alternate Support, WRHA, and Community Living. If you are connected to one of these, or a similar agency, get them to contact us.

Contact us anytime.

House phone: 204.475.5613

Toll Free 1.855.311.0611

McMillan House Manager: Audrey Dennis

McMillan Case Manager: Brittney Haile

McMillanMngr@uchh.ca uchh.ca

739 McMillan Ave Winnipeg R3M 0S8



Who we are

United Church Halfway Homes started nearly 50 years ago. We have helped hundreds and hundreds of women and women make a better life. We have 3 homes in Winnipeg, all on Treaty 1 Land and the home of the Metis Nation.

739 McMillan, 8 beds for women

488 Dominion, 10 beds for men

794 Dorchester, 8 beds for men

We respect all faith traditions.



McMillan House Halfway Home For Women



assisting women to independence

Getting back into the community is your goal, and you can do it, with the right support.

You start with a supportive home base where we help you to connect to resources in the community. You will develop the necessary skills to be able to do things on your own. This is key for long term success. You are a unique individual and we help you to name and overcome *your* challenges.

A special plan, just for you.

At McMillan House we focus on:

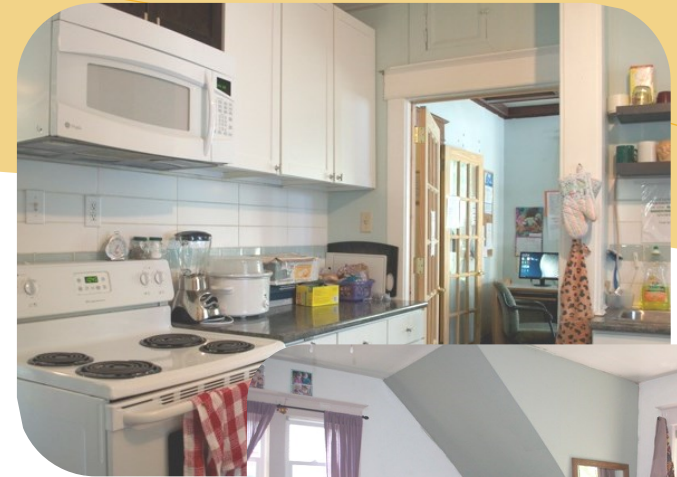
- Peer Support
- Education, Employment & Life Skills Training
- Victim Awareness
- Family Relationships
- One to One Mentoring
- Spiritual Development
- Community Recreation

McMillan House hosts 8 women residents.

It is a comfortable house in a good neighbourhood. The staff are caring, responsible people, on sight 24 hours a day. Our goal is to provide support in a safe, secure and stable environment. Residents share in housekeeping and meal preparation. We have TV, a garden, summer BBQs and social activities. Good bus service is a short walk away.

There are some rules. Some are set by parole. Other rules are the kind that all good families have: respect, honesty, trying your best, helping others. There is freedom too: passes for work or school, visits with family, sweats and ceremonies, and time to work on *your* goals.

The balance of freedom and rules helps you get ready for successful reintegration into the community.



Our Mother & Child Suite: children can come and visit, even stay overnight with you in a private setting.